

# \$1,050,750 - 13825 97 Street, Grande Prairie

MLS® #GP215575

**\$1,050,750**

0 Bedroom, 0.00 Bathroom,  
Land on 4.67 Acres

Albinati Industrial., Grande Prairie, Alberta

Incredible Industrial lot which is well situated on 97 Street in the Albinati Industrial Park on the North end of Grande Prairie. This lot has great natural slop with ideal soil for construction, a rare find in the Grande Prairie area. All major services are in the area. Call your Commercial RealtorÂ© today for more information.

## Essential Information

|           |             |
|-----------|-------------|
| MLS® #    | GP215575    |
| Price     | \$1,050,750 |
| Bathrooms | 0.00        |
| Acres     | 4.67        |
| Type      | Land        |
| Sub-Type  | Land        |
| Status    | Active      |

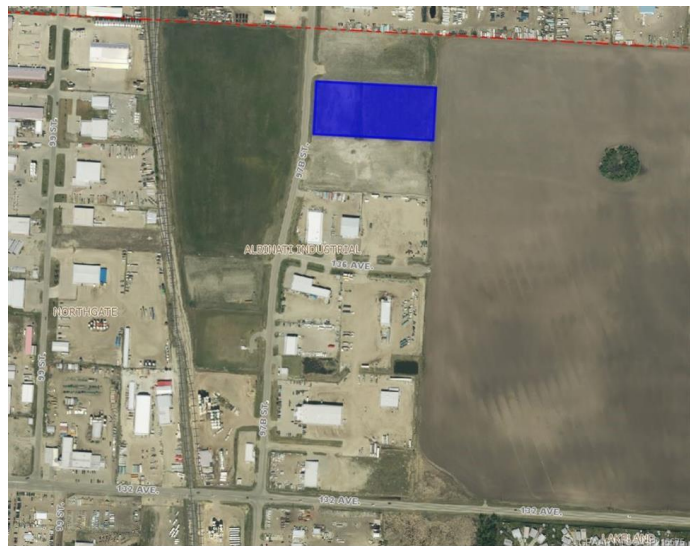
## Community Information

|             |                      |
|-------------|----------------------|
| Address     | 13825 97 Street      |
| Subdivision | Albinati Industrial. |
| City        | Grande Prairie       |
| County      | Grande Prairie       |
| Province    | Alberta              |
| Postal Code | T8V 5B7              |

## Exterior

|                 |         |
|-----------------|---------|
| Lot Description | Cleared |
|-----------------|---------|

## Additional Information



|                |                  |
|----------------|------------------|
| Date Listed    | April 29th, 2020 |
| Days on Market | 1819             |
| Zoning         | IG               |

## **Listing Details**

|                |                       |
|----------------|-----------------------|
| Listing Office | RE/MAX Grande Prairie |
|----------------|-----------------------|

Data is supplied by Pillar 9â„¢ MLS® System. Pillar 9â„¢ is the owner of the copyright in its MLS® System. Data is deemed reliable but is not guaranteed accurate by Pillar 9â„¢. The trademarks MLS®, Multiple Listing Service® and the associated logos are owned by The Canadian Real Estate Association (CREA) and identify the quality of services provided by real estate professionals who are members of CREA. Used under license.