

# \$675,000 - 439 Chelsea Port Crossing, Chestermere

MLS® #A2207102

**\$675,000**

4 Bedroom, 3.00 Bathroom, 1,920 sqft  
Residential on 0.08 Acres

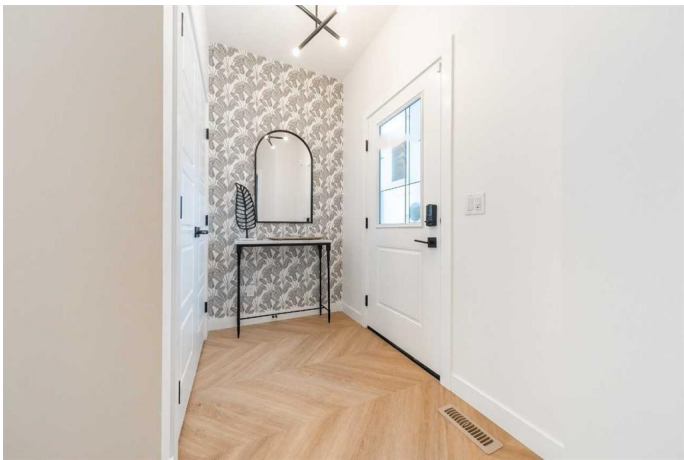
Chelsea\_CH, Chestermere, Alberta

Welcome to the Jade – a modern, stylish home designed for both comfort and function. The spacious kitchen boasts stainless steel appliances, a chimney hood fan, a gas range, and a walk-in pantry. LVP flooring flows throughout the main floor, while tile flooring is featured in wet areas. The open-concept great room includes an electric fireplace, perfect for cozy evenings. A convenient bedroom with a full bath is located on the main floor. Upstairs, a bright bonus room and additional windows throughout bring natural light into every corner. The primary bedroom offers dual sinks, a fiberglass base shower with tiled walls, and a walk-in closet. The basement features larger windows and a side entrance, ready for potential future development. With thoughtful details and a functional layout, the Jade is the ideal home for modern living! Photos are a representative.

Built in 2024

## Essential Information

MLS® #	A2207102
Price	\$675,000
Bedrooms	4
Bathrooms	3.00
Full Baths	3
Square Footage	1,920
Acres	0.08
Year Built	2024



Type	Residential
Sub-Type	Detached
Style	2 Storey
Status	Active

### Community Information

Address	439 Chelsea Port Crossing
Subdivision	Chelsea_CH
City	Chestermere
County	Chestermere
Province	Alberta
Postal Code	T1X2P4

### Amenities

Parking Spaces	4
Parking	Parking Pad

### Interior

Interior Features	Double Vanity, French Door, Open Floorplan, Pantry, Separate Entrance, Smart Home, Walk-In Closet(s), Tankless Hot Water
Appliances	Dishwasher, Gas Range, Microwave, Range Hood, Refrigerator, Tankless Water Heater
Heating	Forced Air, Natural Gas
Cooling	None
Fireplace	Yes
# of Fireplaces	1
Fireplaces	Electric, Decorative
Has Basement	Yes
Basement	Full, Unfinished

### Exterior

Exterior Features	None
Lot Description	Back Lane
Roof	Asphalt Shingle
Construction	Stone, Vinyl Siding, Wood Frame
Foundation	Poured Concrete

### Additional Information

Date Listed	March 31st, 2025
-------------	------------------

Days on Market	17
Zoning	TBD

**Listing Details**

Listing Office	Bode Platform Inc.
----------------	--------------------

Data is supplied by Pillar 9â„¢ MLS® System. Pillar 9â„¢ is the owner of the copyright in its MLS® System. Data is deemed reliable but is not guaranteed accurate by Pillar 9â„¢. The trademarks MLS®, Multiple Listing Service® and the associated logos are owned by The Canadian Real Estate Association (CREA) and identify the quality of services provided by real estate professionals who are members of CREA. Used under license.