

# \$635,000 - 1711 Pinetree Crescent Ne, Calgary

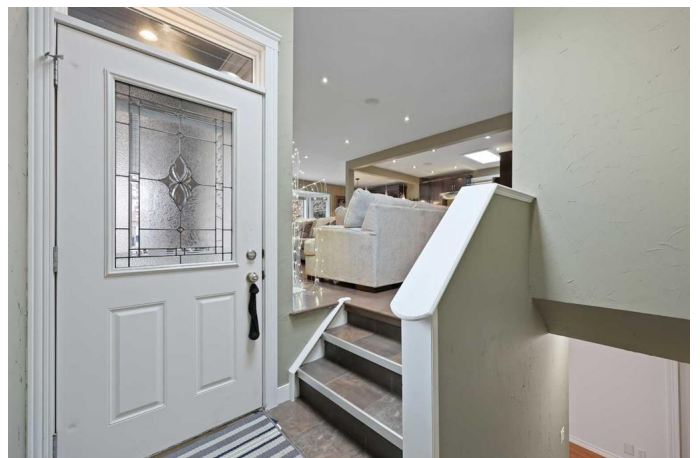
MLS® #A2206624

**\$635,000**

3 Bedroom, 3.00 Bathroom, 1,235 sqft  
Residential on 0.11 Acres

Pineridge, Calgary, Alberta

\* OPEN HOUSE SATURDAY APRIL 5th from 1-3PM \* Check out this charming open concept BUNGALOW with Over 2,200 SQ.FT of living space! Welcome to this beautifully designed bungalow, where comfort meets elegance. From the moment you step inside, you'll be captivated by the warm ambiance and thoughtful layout. Gleaming maple hardwood floors flow throughout the main level, enhancing the bright and airy open-concept design. The heart of the home is the massive kitchen, featuring stainless steel appliances, a skylight, a large eat-up breakfast bar, and a spacious pantry—perfect for those who love to cook and entertain. The dining area is bathed in natural light from a large front window, while the stunning stone-faced fireplace in the living room adds a cozy touch. Retreat to the EXPANSIVE bedroom, complete with a walk-in closet and private 2-piece ensuite. A second bedroom — ideal as a home office or bedroom and a 4-piece bathroom complete the main level. Downstairs, the fully finished basement offers endless possibilities. Whether you envision a recreation room, TV lounge, games area, or workout space, there's plenty of room to make it your own. You'll also find a huge third bedroom, another full bathroom, and ample storage space. Step outside to enjoy the OVERSIZED HEATED DOUBLE GARAGE, a spacious backyard, and a fantastic patio area, perfect for summer BBQs and entertaining. With newer TRIPLE PANE WINDOWS



throughout and an unbeatable location, this home is move-in ready and waiting for you to make it your own. Don't miss this opportunity—schedule your showing today!

Built in 1975

### Essential Information

MLS® #	A2206624
Price	\$635,000
Bedrooms	3
Bathrooms	3.00
Full Baths	2
Half Baths	1
Square Footage	1,235
Acres	0.11
Year Built	1975
Type	Residential
Sub-Type	Detached
Style	Bungalow
Status	Active

### Community Information

Address	1711 Pinetree Crescent Ne
Subdivision	Pineridge
City	Calgary
County	Calgary
Province	Alberta
Postal Code	T1Y1L6

### Amenities

Parking Spaces	4
Parking	Alley Access, Double Garage Detached, Driveway, Heated Garage, Parking Pad, Additional Parking, Oversized
# of Garages	2

### Interior

Interior Features	Breakfast Bar, No Smoking Home, See Remarks, Skylight(s)
Appliances	Dishwasher, Gas Stove, Refrigerator, Washer/Dryer, Window Coverings

Heating	Forced Air, Natural Gas
Cooling	None
Fireplace	Yes
# of Fireplaces	2
Fireplaces	Gas, Wood Burning
Has Basement	Yes
Basement	Finished, Full

### **Exterior**

Exterior Features	Other, Storage
Lot Description	Back Lane, Front Yard, Level, Rectangular Lot
Roof	Asphalt Shingle
Construction	Vinyl Siding, Wood Frame
Foundation	Poured Concrete

### **Additional Information**

Date Listed	March 31st, 2025
Days on Market	2
Zoning	R-CG

### **Listing Details**

Listing Office	RE/MAX First
----------------	--------------

Data is supplied by Pillar 9â„¢ MLSÂ® System. Pillar 9â„¢ is the owner of the copyright in its MLSÂ® System. Data is deemed reliable but is not guaranteed accurate by Pillar 9â„¢. The trademarks MLSÂ®, Multiple Listing ServiceÂ® and the associated logos are owned by The Canadian Real Estate Association (CREA) and identify the quality of services provided by real estate professionals who are members of CREA. Used under license.