

\$449,000 - Range Road 200 Highway 13, Rural Camrose County

MLS® #A2190755

\$449,000

0 Bedroom, 0.00 Bathroom,
Land on 25.15 Acres

NONE, Rural Camrose County, Alberta

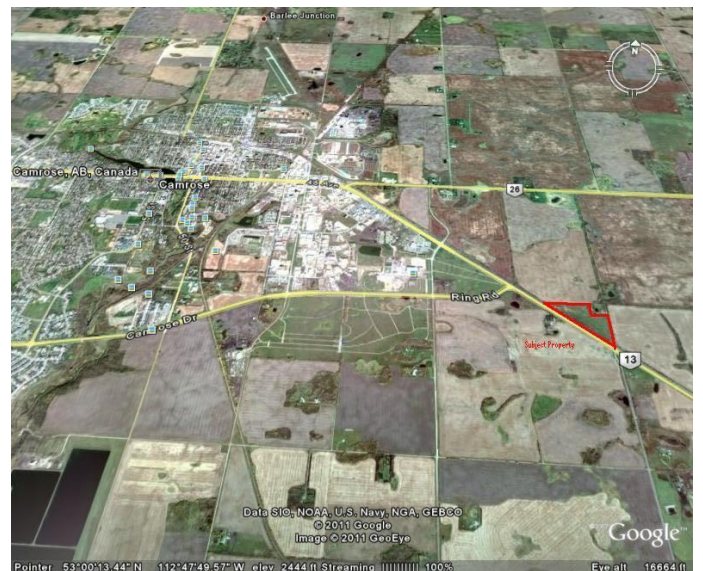
Introducing a prime parcel of land on the outskirts of Camrose! With just over 25 acres of versatile space that has been approved for rezoning, this location offers a numerous of possibilities, whether you envision developing a commercial hub, an industrial complex, or an acreage subdivision. The land's proximity to the city ensures easy access to amenities while still providing the charm of a rural setting. This is a fantastic opportunity for investors and developers looking to have a growing area with limitless potential for alternate uses. Donâ€™t miss your chance to secure this piece of land!

Essential Information

| | |
|-----------|-----------------|
| MLS® # | A2190755 |
| Price | \$449,000 |
| Bathrooms | 0.00 |
| Acres | 25.15 |
| Type | Land |
| Sub-Type | Commercial Land |
| Status | Active |

Community Information

| | |
|-------------|---------------------------|
| Address | Range Road 200 Highway 13 |
| Subdivision | NONE |
| City | Rural Camrose County |



| | |
|-------------|----------------|
| County | Camrose County |
| Province | Alberta |
| Postal Code | T4V 3P0 |

Additional Information

| | |
|----------------|--------------------|
| Date Listed | January 29th, 2025 |
| Days on Market | 80 |
| Zoning | A |

Listing Details

| | |
|----------------|------------|
| Listing Office | CIR Realty |
|----------------|------------|

Data is supplied by Pillar 9â„¢ MLS® System. Pillar 9â„¢ is the owner of the copyright in its MLS® System. Data is deemed reliable but is not guaranteed accurate by Pillar 9â„¢. The trademarks MLS®, Multiple Listing Service® and the associated logos are owned by The Canadian Real Estate Association (CREA) and identify the quality of services provided by real estate professionals who are members of CREA. Used under license.