

\$460,000 - 724 Florence Ho Leong Crescent N, Lethbridge

MLS® #A2183451

\$460,000

3 Bedroom, 2.00 Bathroom, 924 sqft
Residential on 0.08 Acres

Legacy Ridge / Hardieville, Lethbridge, Alberta

Welcome to this stunning 4-level split house situated in a desirable neighborhood, conveniently located near schools and parks. As you enter, you are greeted by a welcoming foyer that sets the tone for the rest of the home. On the main level, you will discover a spacious kitchen designed with both style and practicality in mind. The kitchen features a generous long island, perfect for family meals, casual dining, and gatherings with friends. The island provides more counter space for food preparation and is an ideal spot for loved ones to congregate while you cook. Adjacent to the kitchen, the open-concept living and dining areas create an inviting space for relaxation and entertainment. The living room also boasts large windows. On the second level you have the primary bedroom and another ample bedroom along with a full bathroom which features jetted tub and separate shower. The 3 third level features a cozy family room with easy access to the backyard, perfect for movie nights or game days, an another bathroom. On the fourth level you will find an spacious bedroom , laundry room and a vast storage/den. Additionally there is also a double detached garage and generous backyard. Don't miss out on this one!

Built in 2009

Essential Information



MLS® #	A2183451
Price	\$460,000
Bedrooms	3
Bathrooms	2.00
Full Baths	2
Square Footage	924
Acres	0.08
Year Built	2009
Type	Residential
Sub-Type	Detached
Style	4 Level Split
Status	Active

Community Information

Address	724 Florence Ho Leong Cres
Subdivision	Legacy Ridge / Hardieville
City	Lethbridge
County	Lethbridge
Province	Alberta
Postal Code	T1H5R5

Amenities

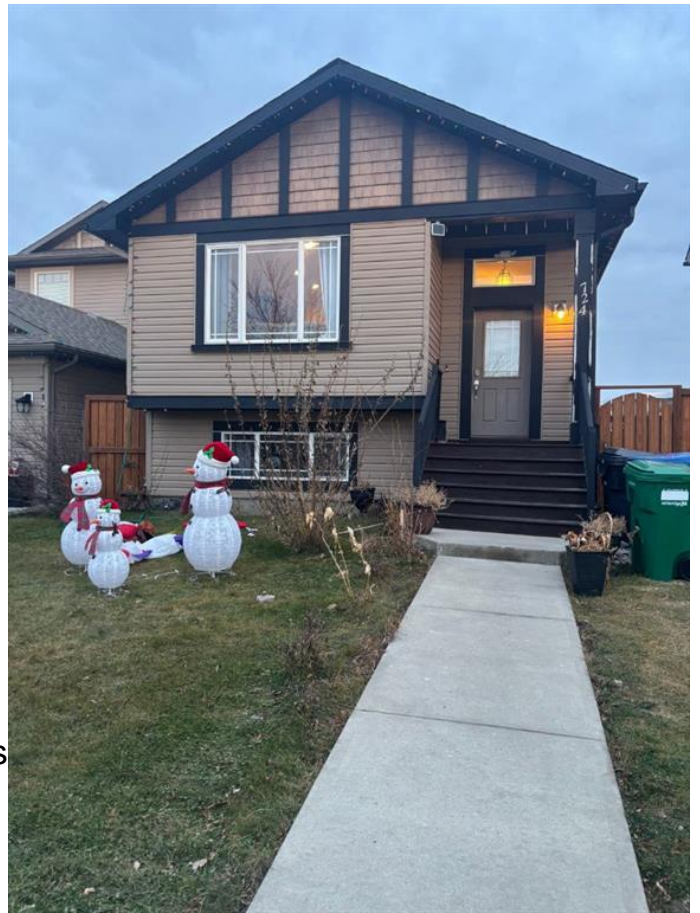
Parking Spaces	2
Parking	Double Garage Detached
# of Garages	2

Interior

Interior Features	Ceiling Fan(s), Open Floorpl Sump Pump(s), Tankless Ho
Appliances	Dishwasher, Electric Stove, Heater
Heating	Forced Air, Natural Gas
Cooling	None
Has Basement	Yes
Basement	Finished, Full, Walk-Out

Exterior

Exterior Features	Private Entrance, Garden
Lot Description	Landscaped



Roof	Asphalt Shingle
Construction	Vinyl Siding
Foundation	Poured Concrete

Additional Information

Date Listed	December 14th, 2024
Days on Market	126
Zoning	R-SL

Listing Details

Listing Office	RE/MAX REAL ESTATE - LETHBRIDGE
----------------	---------------------------------

Data is supplied by Pillar 9â„¢ MLS® System. Pillar 9â„¢ is the owner of the copyright in its MLS® System. Data is deemed reliable but is not guaranteed accurate by Pillar 9â„¢. The trademarks MLS®, Multiple Listing Service® and the associated logos are owned by The Canadian Real Estate Association (CREA) and identify the quality of services provided by real estate professionals who are members of CREA. Used under license.