

# \$134,995 - 1037 8 Avenue, Wainwright

MLS® #A2176577

**\$134,995**

2 Bedroom, 1.00 Bathroom, 898 sqft

Residential on 0.16 Acres

Wainwright, Wainwright, Alberta

Price Reduced! Zoned R2 on a corner lot across the street from Wainwright Elementary School, central to Wainwright High School and Blessed Sacrament K-12! This 2 bedroom, 898sq.ft. bungalow with a little TLC could be a great home for a first time buyer! The huge 26x28 heated garage with 220V power and BRAND NEW SHINGLES, would give you plenty of space to work on projects and complete the renovations to transform your new home! Call today!

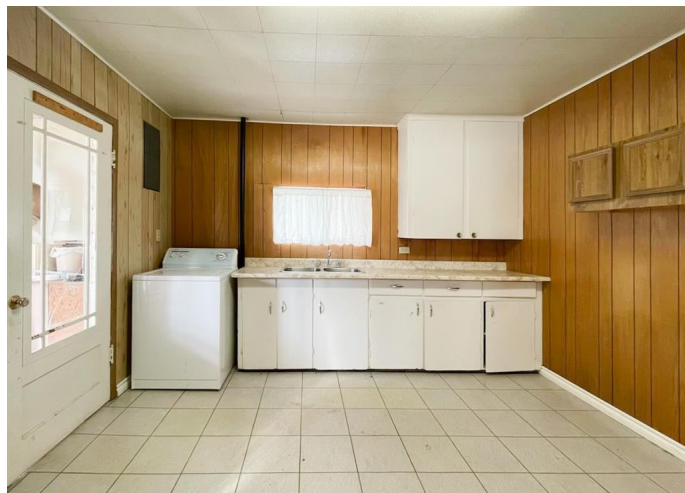
Built in 1939

## Essential Information

MLS® #	A2176577
Price	\$134,995
Bedrooms	2
Bathrooms	1.00
Full Baths	1
Square Footage	898
Acres	0.16
Year Built	1939
Type	Residential
Sub-Type	Detached
Style	Bungalow
Status	Active

## Community Information

Address	1037 8 Avenue
Subdivision	Wainwright



City	Wainwright
County	Wainwright No. 61, M.D. of
Province	Alberta
Postal Code	T9W 1H4

### Amenities

Parking Spaces	4
Parking	Double Garage Detached
# of Garages	2

### Interior

Interior Features	See Remarks
Appliances	Electric Stove
Heating	Forced Air, Natural Gas
Cooling	None
Has Basement	Yes
Basement	None, Crawl Space

### Exterior

Exterior Features	None
Lot Description	Lawn, Corner Lot, Treed
Roof	Asphalt Shingle
Construction	Vinyl Siding
Foundation	Block, Poured Concrete

### Additional Information

Date Listed	October 30th, 2024
Days on Market	172
Zoning	R2

### Listing Details

Listing Office	RE/MAX BAUGHAN REALTY LTD.
----------------	----------------------------

Data is supplied by Pillar 9â„¢ MLSÂ® System. Pillar 9â„¢ is the owner of the copyright in its MLSÂ® System. Data is deemed reliable but is not guaranteed accurate by Pillar 9â„¢. The trademarks MLSÂ®, Multiple Listing ServiceÂ® and the associated logos are owned by The Canadian Real Estate Association (CREA) and identify the quality of services provided by real estate professionals who are members of CREA. Used under license.