

# \$599,900 - 86 Lanterman Close, Red Deer

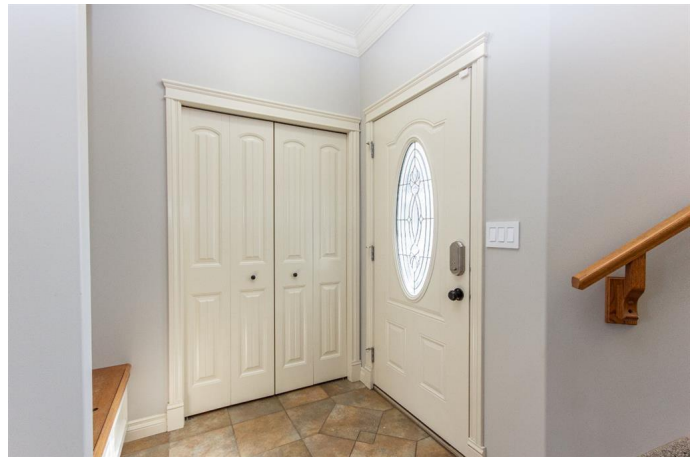
MLS® #A2169873

**\$599,900**

4 Bedroom, 4.00 Bathroom, 1,671 sqft  
Residential on 0.17 Acres

Lonsdale, Red Deer, Alberta

FULLY FINISHED | 28x30 HEATED SHOP WITH BATHROOM | RV PARKING | PIE SHAPED LOT - Welcome to this move-in ready 2-storey home in the sought-after Lonsdale community! This fully finished home offers 1,669 sq. ft. above grade and sits on a spacious pie-shaped lot backing onto serene walking paths with no rear neighbours! Step inside to discover a bright, open-concept main floor with 9' ceilings and low maintenance vinyl plank flooring. The large living room features a cozy gas fireplace, creating the perfect space to relax and unwind. The spacious kitchen features an abundance of cabinetry, a large island with a raised eating bar, a walk-in pantry, and upgraded stainless steel appliances. Adjacent to the kitchen, the generous dining area offers plenty of space for family gatherings and provides direct access to the back deck with privacy screens—perfect for summer entertaining. A convenient 2-piece powder room completes the main level. Upstairs, you'll find the main 4 piece bathroom and three spacious bedrooms, including a large primary suite with a 3-piece ensuite. The fully finished basement features 9' ceilings, a large rec room, a fourth bedroom, and a 3-piece bathroom, making it an ideal retreat for guests or teens. The outdoor space offers both privacy and functionality, with a spacious yard and a massive heated 28'™x30'™ detached shop featuring 10'™ ceilings, a 2-piece bathroom, and 220V power—perfect for any project or



storage needs. There is also a large parking pad for RV parking with its own convenient sani dump. If you need more parking, the heated double attached garage can easily accommodate your needs. Situated with walking paths right out your back door, and a short distance to Mattie McCullough Elementary School, this move-in-ready home is ready for its new owners!

Built in 2005

### **Essential Information**

|                |             |
|----------------|-------------|
| MLS® #         | A2169873    |
| Price          | \$599,900   |
| Bedrooms       | 4           |
| Bathrooms      | 4.00        |
| Full Baths     | 3           |
| Half Baths     | 1           |
| Square Footage | 1,671       |
| Acres          | 0.17        |
| Year Built     | 2005        |
| Type           | Residential |
| Sub-Type       | Detached    |
| Style          | 2 Storey    |
| Status         | Active      |

### **Community Information**

|             |                    |
|-------------|--------------------|
| Address     | 86 Lanterman Close |
| Subdivision | Lonsdale           |
| City        | Red Deer           |
| County      | Red Deer           |
| Province    | Alberta            |
| Postal Code | T4R 3N9            |

### **Amenities**

|                |  |
|----------------|--|
| Parking Spaces | 8  |
| Parking        | 220 Volt Wiring, Additional Parking, Alley Access, Concrete Driveway, Double Garage Attached, Garage Faces Front, Garage Faces Rear, Heated Garage, Off Street, Parking Pad, RV Access/Parking, Triple |

Garage Detached  
# of Garages 5

### Interior

Interior Features Breakfast Bar, Closet Organizers, High Ceilings, Kitchen Island, Laminate Counters, Open Floorplan, Pantry, Recessed Lighting, Separate Entrance, Storage, Track Lighting, Walk-In Closet(s)  
Appliances Dishwasher, Garage Control(s), Microwave Hood Fan, Refrigerator, Stove(s), Washer/Dryer, Window Coverings  
Heating Forced Air, Natural Gas  
Cooling Central Air  
Fireplace Yes  
# of Fireplaces 1  
Fireplaces Gas, Living Room, Mantle, Tile  
Has Basement Yes  
Basement Finished, Full

### Exterior

Exterior Features Private Yard  
Lot Description Back Lane, Back Yard, Front Yard, Low Maintenance Landscape, Pie Shaped Lot  
Roof Asphalt Shingle  
Construction Concrete, Vinyl Siding, Wood Frame  
Foundation Poured Concrete

### Additional Information

Date Listed March 21st, 2025  
Days on Market 14  
Zoning R-L

### Listing Details

Listing Office RE/MAX real estate central alberta

Data is supplied by Pillar 9â„¢ MLSÂ® System. Pillar 9â„¢ is the owner of the copyright in its MLSÂ® System. Data is deemed reliable but is not guaranteed accurate by Pillar 9â„¢. The trademarks MLSÂ®, Multiple Listing ServiceÂ® and the associated logos are owned by The Canadian Real Estate Association (CREA) and identify the quality of services provided by real estate professionals who are members of CREA. Used under license.