

\$699,000 - Lot 7 West Mitsue Industrial Road, Rural Lesser Slave River No. 124, M.D. of

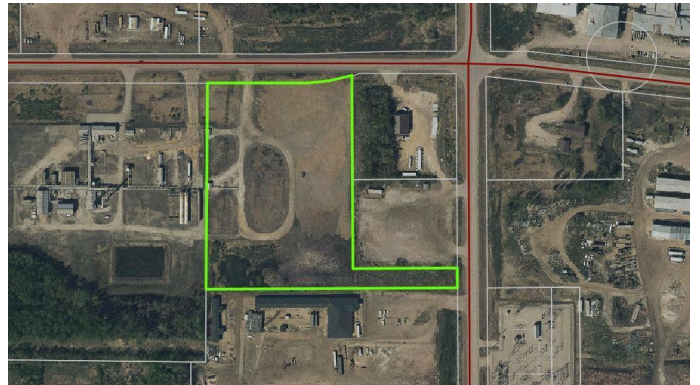
MLS® #A2160469

\$699,000

0 Bedroom, 0.00 Bathroom,
Land on 8.35 Acres

NONE, Rural Lesser Slave River No. 124,
M.D. of, Alberta

Prime industrial location in the heart of Mitsue Industrial Park!! 8.35 acres zoned heavy industrial with landscaped roads throughout the property. Close to all the Lumber, Veneer and Pulp mills. 2 access roads: one from the paved West Mitsue Industrial Road and a back access to the East Mitsue road. Great opportunity for any business involved in the Forestry, Transportation or Oil/Gas sector. So many opportunities for your business development!! Seller will also consider a term lease for the property.



Essential Information

MLS® #	A2160469
Price	\$699,000
Bathrooms	0.00
Acres	8.35
Type	Land
Sub-Type	Industrial Land
Status	Active

Community Information

Address	Lot 7 West Mitsue Industrial Road
Subdivision	NONE
City	Rural Lesser Slave River No. 124, M.D. of
County	Lesser Slave River No. 124, M.D. of

Province	Alberta
Postal Code	T0G 2A0

Amenities

Utilities	Electricity Available
-----------	-----------------------

Additional Information

Date Listed	August 23rd, 2024
-------------	-------------------

Days on Market	221
----------------	-----

Zoning	Heavy Industrial
--------	------------------

Listing Details

Listing Office	CENTURY 21 NORTHERN REALTY
----------------	----------------------------

Data is supplied by Pillar 9â„¢ MLSÂ® System. Pillar 9â„¢ is the owner of the copyright in its MLSÂ® System. Data is deemed reliable but is not guaranteed accurate by Pillar 9â„¢. The trademarks MLSÂ®, Multiple Listing ServiceÂ® and the associated logos are owned by The Canadian Real Estate Association (CREA) and identify the quality of services provided by real estate professionals who are members of CREA. Used under license.