

# \$1,100,000 - On Highway 43, Grande Prairie

MLS® #A2053233

**\$1,100,000**

0 Bedroom, 0.00 Bathroom,  
Land on 135.00 Acres

NONE, Grande Prairie, Alberta

135 acres located just West of Grande Prairie within city limits. A great location only 5 minutes from Costco and situated along Highway 43. Annual ATCO and Telus revenue.

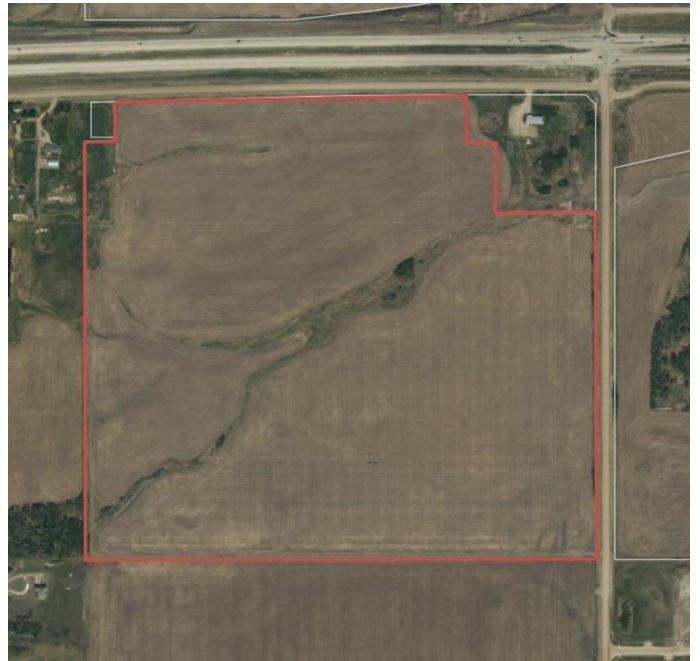
Discover an exceptional opportunity with this expansive parcel of land, perfectly positioned for commercial or industrial development. Boasting remarkable potential and nearly direct access to Highway 43, this property offers an enviable location for businesses seeking strategic advantages and convenient transportation links.

## Essential Information

MLS® #	A2053233
Price	\$1,100,000
Bathrooms	0.00
Acres	135.00
Type	Land
Sub-Type	Residential Land
Status	Active

## Community Information

Address	On Highway 43
Subdivision	NONE
City	Grande Prairie
County	Grande Prairie
Province	Alberta
Postal Code	T8W 5E6



## **Additional Information**

Date Listed	June 1st, 2023
Days on Market	674
Zoning	AG

## **Listing Details**

Listing Office      Royal LePage - The Realty Group

Data is supplied by Pillar 9â„¸ MLSÂ® System. Pillar 9â„¸ is the owner of the copyright in its MLSÂ® System. Data is deemed reliable but is not guaranteed accurate by Pillar 9â„¸. The trademarks MLSÂ®, Multiple Listing ServiceÂ® and the associated logos are owned by The Canadian Real Estate Association (CREA) and identify the quality of services provided by real estate professionals who are members of CREA. Used under license.